

MPR-Quick fasteners

galvanised

Application

- For secure and fast installation in the channel slot of MPR-Support channels for connecting pipe clamps and mounting elements
- Angle-mounting for fast and efficient installation of brackets and mounting angles

Your advantages

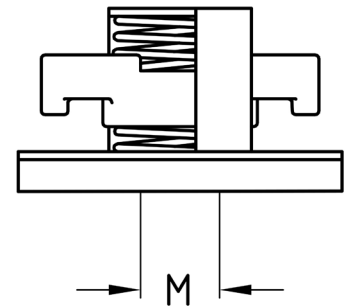
- Versatile quick fastener for all common channel profiles with upturned edges in the channel slot
- Simply turn into the slot - click and ready
- For channels with a material thickness of 2 to 3 mm
- Can be used for slot widths from 20 mm upwards
- Safely retained after screwing in, alignable until screw is tightened
- Secure hold even in vertical channel slots
- Tooth profile on the fastener ensures form-locking connection with toothed channel sections
- Suitable for MPR-Support channels 41/41



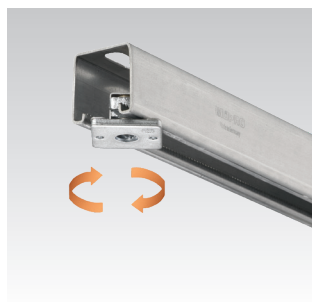
MPR-Quick fasteners



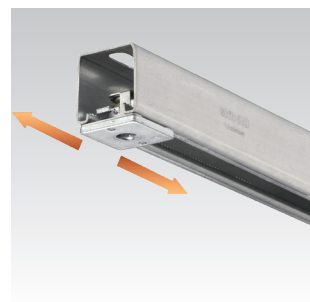
MPR-Quick fasteners for angle mounting



Insert the MPR-Quick fastener in the channel slot



Rotate the MPR-Quick fastener by 90°



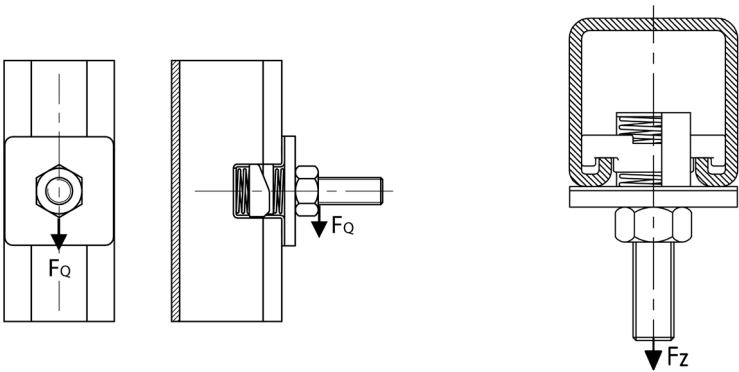
Position the MPR-Quick fastener in the channel



Screw the threaded pin into the MPR-Quick fastener and lock in place with a hexagonal nut. Then mount the pipe clamp

Design standard	For profiles 41/41	Connecting thread	Part no.	Sales unit	Pack unit
for angle mounting		M8	120907	100	Pieces
		M10	120898		
		M12	120902		
		M8	120806	50	
		M10	120798	100	

MPR-Quick fasteners
galvanised



Features



Connecting thread	Max. recommended tensile load Fz [N]	Max. recommended load lateral (displacement) FQ [N]	Tightening torque [Nm]
M8	6,000	3,000	30
M10			
M12			