

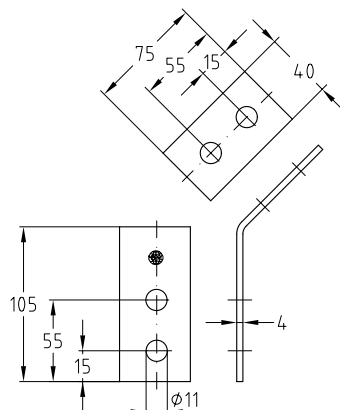
MPR-Mounting angle 45° galvanised

Application

- Solid fixing element for construction of pre-wall installations and shelves as well as for channel constructions for attachments of pipelines and air ducts without welding
- Also applicable for direct mounting on walls, ceilings or floors

Your advantages

- Variable mounting options
- Versatile, e.g. as: support bracket, connecting element, angle bracket
- Multi-purpose component for professional, practical installation solutions



For profiles	Part no.	Sales unit	Pack unit
41/21-41/124	118781	10	Pieces

i Please refer to pages 4/85 to 4/87 for mounting angles 90° for MPR-Support channels 41/21 to 41/124.

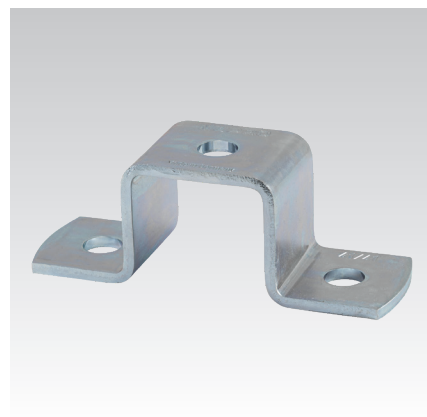
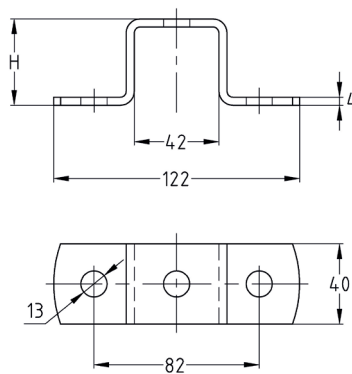
MPR-Cross channel connectors galvanised

Application

- For cross-connections in pre-wall mounted installations and shelves made from MPR-Support channels

Your advantages

- Easy-to-install connection element for setting up structures with correctly designed static loads using MPR-Support channels
- Greater flexibility when setting up structures made from channels
- For rotation-resistant attachment to building structure



For profiles	Dimensions H [mm]	Part no.	Sales unit	Pack unit
41/21	23	151093	25	Pieces
41/41, 41/42	43	151994		
41/62	64	151094		
41/82	84	151995		
41/124	126	151996		