

### MPR-Wall hanger brackets

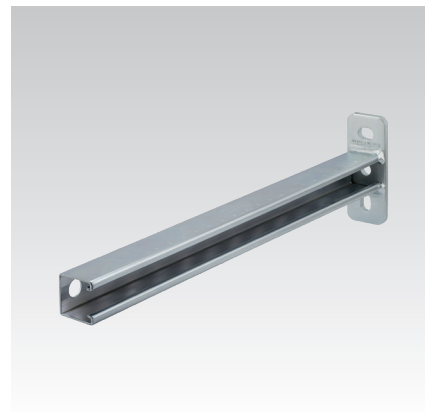
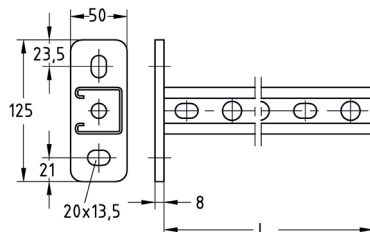
with lateral slot, galvanised

#### Application

- Ideal as cantilever support structure for riser pipes
- Applicable in combination with saddle support and channel support brackets as a cross-beam for pipe attachments in shafts and ducts
- Applicable as a cantilever bracket for supporting air ducts
- For use in dry interiors

#### Your advantages

- The strong base plate ensures a high load carrying capacity
- The vertical and horizontal holes in the base plate allow easy height adjustment of the bracket
- Fixing in the side slot of the support channel allows simple alignment of parallel pipelines
- Clean-cut appearance by the use of MPR-protection caps



Profile	Length L [mm]	Dimensions [mm]				Part no.	Sales unit	Pack unit
		A	B	s	V			
41/41/2.0	320	125	50	8	13.5 x 20	165251	20	Pieces
	480					165253		