

MPC-VARIO-Saddle support

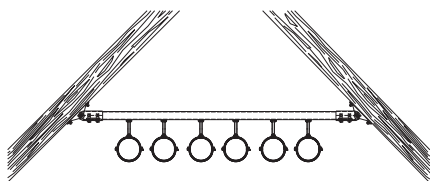
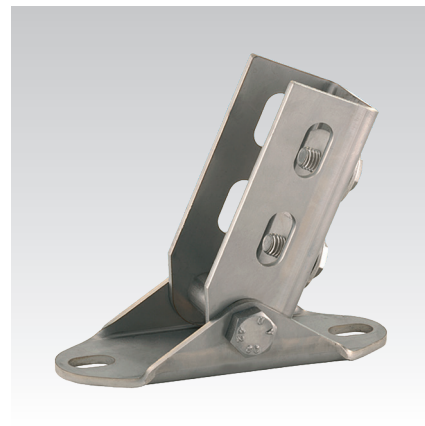
hot-dip galvanised

Application

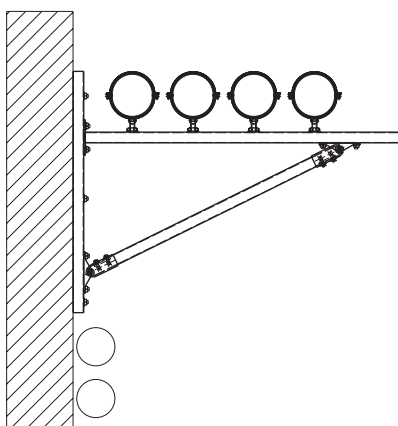
- Ideal for attachment to inclined roof trusses, vaults and in round cable shafts
- Suitable for outdoor use

Your advantages

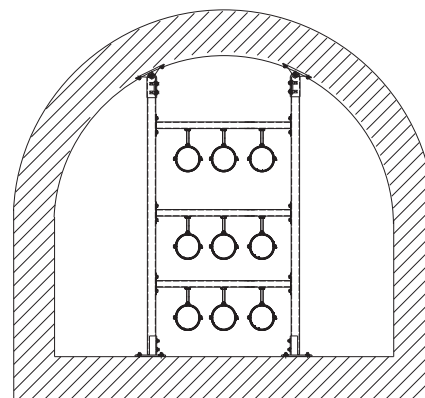
- Variable angle adjustment possible during installation
- Simple and quick installation due to pre-installed double rail nut
- Attachment to the slot of support channels 38/40 possible in all directions



Attachment of a pipe run to an inclined roof truss

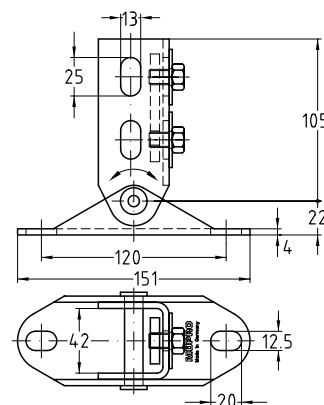


Pipes installed on an wall hanger bracket with diagonal strut



Installation of brackets in vaults or round cable ducts and shafts

Completely pre-assembled:
1 MPC-VARIO-Saddle support,
1 Double rail nut,
2 Hexagonal head bolts M10,
2 Washers



For profiles	Min. angle [°]	Part no.	Sales unit	Pack unit
38/40-40/120	20	129647	1	Pieces

