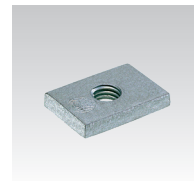


**MPC-Rail nuts**

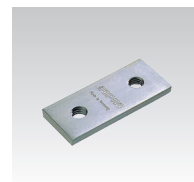
for MPC-Support channels and wall hanger brackets, high-temperature galvanised

For profiles	Thread	Length [mm]	Width [mm]	Thickness [mm]	Part no.	Sales unit	Pack unit
38/40-40/120	M8	32.8	23	6	153226	100	Pieces
	M10	33			139500	1	
	M12				139260		

**MPC-Double rail nut**

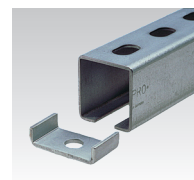
for MPC-Support channels and wall hanger brackets, high-temperature galvanised

For profiles	Thread	Length [mm]	Width [mm]	Thickness [mm]	Part no.	Sales unit	Pack unit
38/40-40/120	M10	70	30	6	152171	1	Pieces

**MPC-Clamp bracket**

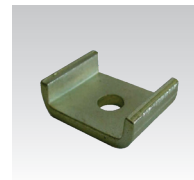
for MPC-Support channels and wall hanger brackets, hot-dip galvanised

For profiles	For thread	Part no.	Sales unit	Pack unit
38/40	M10	114444	100	Pieces

**MPC-Clamp bracket**

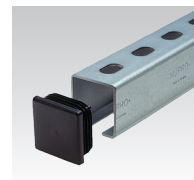
heavy-duty version, for MPC-Support channels and wall hanger brackets, to transfer of large forces, hot-dip galvanised

For profiles	For thread	Part no.	Sales unit	Pack unit
39/52, 40/60, 40/80, 40/120	M12	114554	1	Pieces

**MPC-Protection caps**

for MPC-Support channels and wall hanger brackets

For profiles	Part no.	Sales unit	Pack unit
27/18	106000	100	Pieces
28/30	106002		
38/40, 38/80	106006	50	
40/60, 40/120	106008	25	
40/80	106009		

**Washers**

for MPC-Support channels, hot-dip galvanised

For thread	Outer diameter [mm]	Inner diameter [mm]	Thickness [mm]	Part no.	Sales unit	Pack unit
M8	24	8.4	2	162200	1	Pieces
M10	30	10.5	2.5	132832		

