

## MPC-VARIO-Saddle support

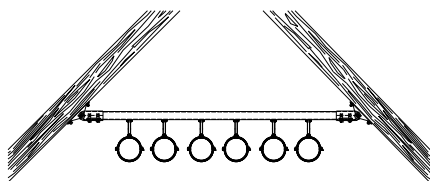
stainless steel

**Application**

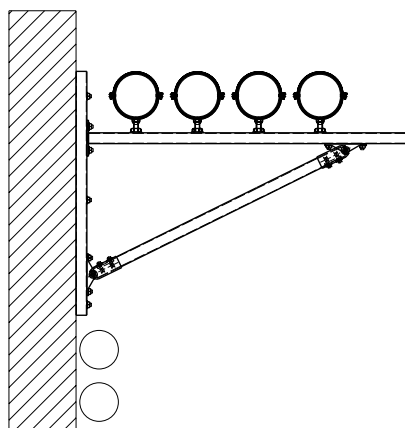
- Ideal for attachment to inclined roof trusses, vaults and in round cable shafts

**Your advantages**

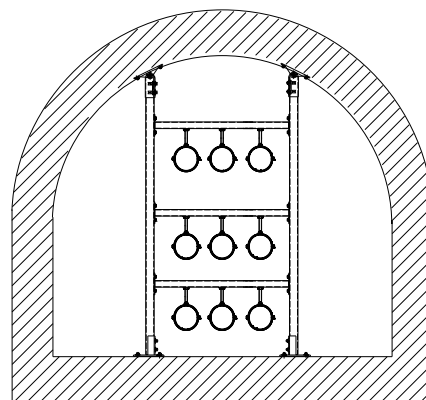
- Variable angle adjustment possible during installation
- Simple and quick installation due to pre-installed double rail nut
- Attachment to the slot of support channels 38/40 possible in all directions



Attachment of a pipe run to an inclined roof truss

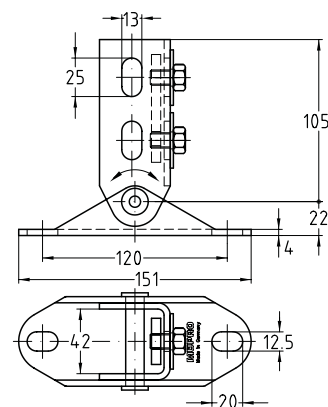


Pipes installed on an wall hanger bracket with diagonal strut



Installation of brackets in vaults or round cable ducts and shafts

Completely pre-assembled:  
 1 MPC-VARIO-Saddle support,  
 1 Double rail nut,  
 2 Hexagonal head bolts M10,  
 2 Washers



For profiles	Min. angle [°]	Material	Part no.	Sales unit	Pack unit
38/40, 40/60	20	V2A	129659	1	Pieces