

## MPC-Hammer-head bolts

stainless steel

## Application

- For time-saving, efficient attachment to MPC-Support channels

## Your advantages

- Ideal for attachment of channel constructions and connecting elements

- Suitable for profiles 38/24, 38/40, 39/52, 40/60, 40/80, 38/48, 38/80 and 40/120
- For direct insertion in the channel slot - even between the attachment bolts
- Supplied with washers and hexagonal nuts



## Features



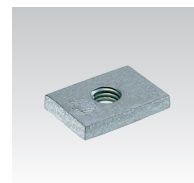
For profiles	Max. allowable bearing point load capacity of channel [N]	Connecting thread	Max. recommended tensile load Fz [N]	Tightening torque [Nm]
38/24	2,200	M8	2,200	20
		M10		30
38/40, 38/80	5,000	M8	5,000	20
		M10		30
39/52	6,700	M8	6,700	20
		M10		30
40/60, 40/80, 40/120	8,300	M8	8,300	20
		M10		30

Connecting thread	Length [mm]	Usable thread length [mm]	Material	Part no.	Sales unit	Pack unit
M8	30	20	V2A	115331	1	Pieces
M10		19		115307		

## MPC-Rail nuts

for MPC-Support channels and wall hanger brackets, stainless steel

For profiles	Thread	Length [mm]	Width [mm]	Thickness [mm]	Material V2A Part no.	Material V4A Part no.	Sales unit	Pack unit
27/18, 28/30	M8	22	14	5	120031	120035	100	Pieces
38/40, 40/60	M6	32.8	23	6	148758	-		
	M8	31	16	6	148760			
		32.8	23		118034	118037		
	M10				117962	117965		
	M12				117980	117983		



## MPC-Double rail nut

for MPC-Support channels and wall hanger brackets, stainless steel

For profiles	Thread	Length [mm]	Width [mm]	Thickness [mm]	Material	Part no.	Sales unit	Pack unit
38/40, 40/60	M10	70	30	6	V2A	118147	1	Pieces

