

### MPC-Hammer-head fasteners

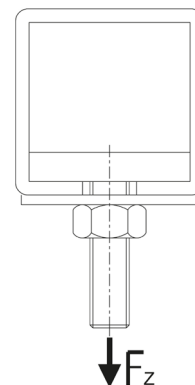
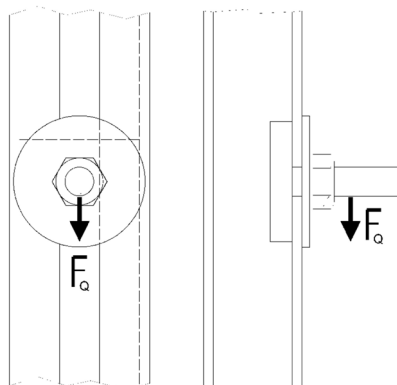
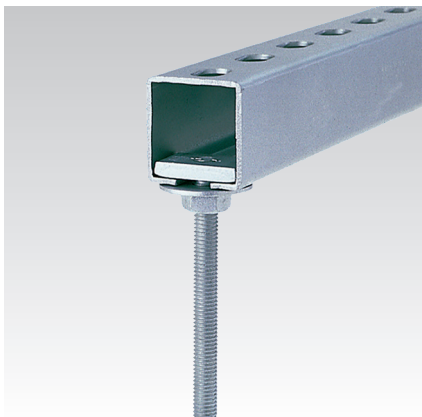
stainless steel

#### Application

- For time-saving, efficient attachment of pipe clamps to MPC-Support channels

#### Your advantages

- Practical range of lengths
- For insertion at any point into the slot of channel support profiles 27/18 and 28/30
- Lateral adjustment at any time, allows perfect alignment of the pipe-line after installation
- Various lengths and thread diameters can be combined within the same channel
- Supplied with with washers and hexagonal nuts



#### Features



For profiles	Max. allowable bearing point load capacity of channel [N]	Connecting thread	Max. recommended tensile load F <sub>Z</sub> [N]	Max. recommended load lateral (displacement) F <sub>Q</sub> [N]	Tightening torque [Nm]
27/18	1,700	M8	1,000	400	10
28/30	2,500				
38/40	5,000		2,500	1,000	20
		M10	2,800	1,200	30
		M12	5,000	1,800	40
40/60	8,300	M8	3,500	1,000	20
		M10	4,000	1,200	30
		M12	8,300	1,800	40

For profiles	Connecting thread	Length [mm]	Usable thread length [mm]	Material V2A Part no.	Material V4A Part no.	Sales unit	Pack unit
27/18, 28/30	M8	25	7	115134	115139	50	Pieces
		30	15	115143	115148		
		40	25	115157	115160		
		50	35	115169	115172		
		80	65	115184	115187		
38/40, 40/60	M8	25	7	115050	115059		
		35	20	115053	115077		
		50	35	115098	115095		
		35	18	114978	114993		
	M10	35	18	115008	115017		
	M12		15				