

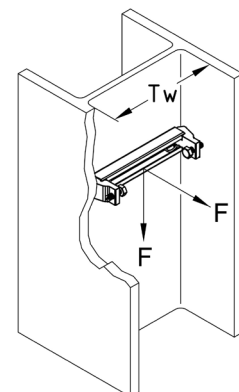
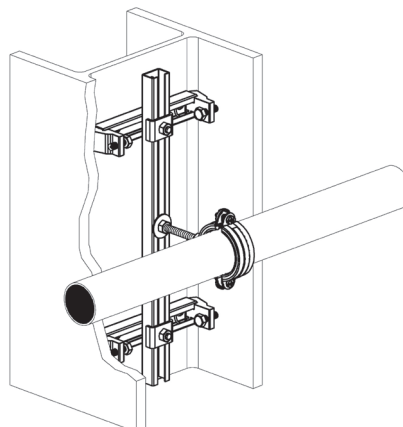
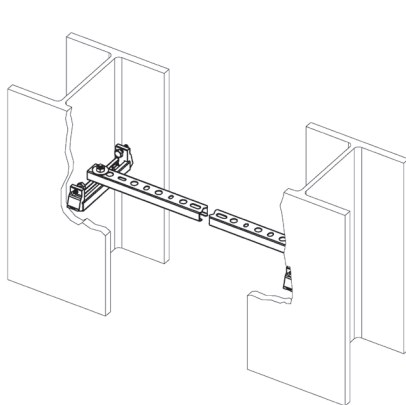
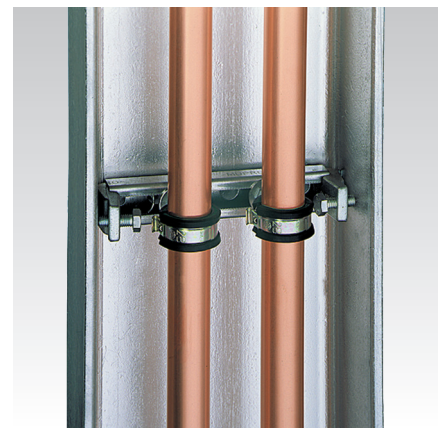
MPC-Girder support galvanised

Application

- Clamping element for fastening MPC-Support channel sections between the flanges of structural steel sections

Your advantages

- Ideal for attachment of pipelines and electrical systems to steel girders
- Attachment on girder without welding or drilling
- Tight hold due to 3-point load transfer on both sides
- Lock washer for a secure hold in the channel section during installation
- Simple attachment of pipelines using MPC-Hammer head fasteners
- Adaptable to all girder widths on site by the length of the channel section



Features

For girder flange expanses T_w	90-350 mm
Max. recommended load [N]	850
Cut length L of the channel section	$L = T_w - 25 \text{ mm}$

For profiles	Part no.	Sales unit	Pack unit
27/18, 28/30	130286	10	Pieces

⚠ Larger spans are possible, however at reduced loads.