

## MPC-Girder cleats

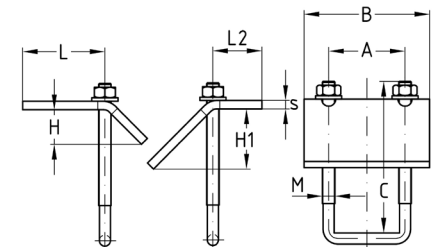
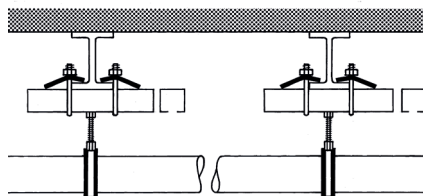
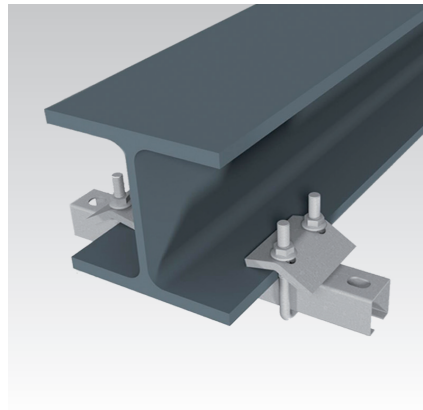
galvanised

### Application

- Attachment of MPC-Support channels to steel girders without drilling or welding
- For use in dry interiors

### Your advantages

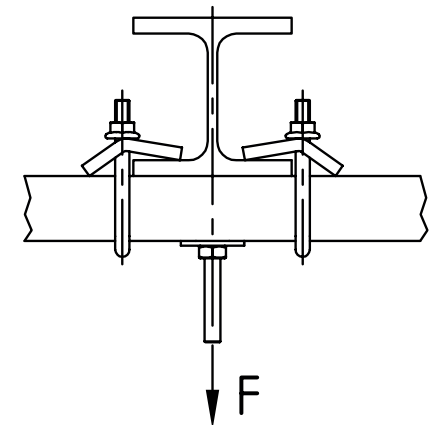
- Attachment to the girder without welding or drilling
- Allows subsequent adjustment of the channels along and across the supporting beam
- Suitable for flange thicknesses of common support profiles
- Easy to install, pre-assembled kit
- Proper attachment of suspended loads on girders
- Approved by VdS



### Features

VdS  
G 4830077

For profiles	Thread U-brackets	Max. permitted loading/pair with hammer head bolts, hammer head fasteners [N]		
		M8	M10	M12
38/24, 38/48	M8	1,000	2,200	5,000
38/40		2,500	2,800	
39/52		3,000	3,300	6,700
40/60		3,500	4,000	8,300
38/40, 38/80	M10	2,500	2,800	5,000
39/52		3,000	3,300	6,700
40/60, 40/80, 40/120		3,500	4,000	8,300



### Proof of usability

MPC-Girder cleats	Profiles	For threaded connection with hammer head bolts, hammer head fasteners
M8	38/24, 38/40, 39/52, 40/60	M8, M10, M12
M10	38/40, 38/80, 39/52, 40/60, (40/80), (40/120)	(M8), M10, M12, M16

For profiles	Thread	Spanner width [mm]	Max. clamping thickness [mm]	VdS	Dimensions [mm]								Part no.	Sales unit	Pack unit
					A	B	C	H	H1	L	L2	s			
27/18, 28/30	M6	10	22		37	60	80	18	29	43.8	27.8	4	130281	1	Pieces
38/24, 38/40	M8	13		x	48	70		17	24.5	38.2	27.2	6	130283		
39/52, 40/60				x			100					8	130284		
38/40, 39/52, 40/60	M10	15		x	50	80		18.5		39.7	30.7		130273		
		17	42				125	19.4	43	64			130272	15	
38/80, 40/80		15	22	x				18.5	24.5	39.7			130274	2	
40/120				x			180						130277		