

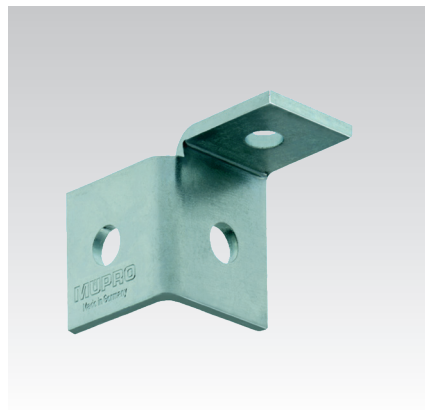
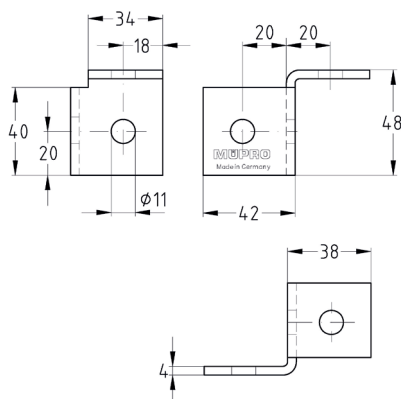
MPC-Lateral angles galvanised

Application

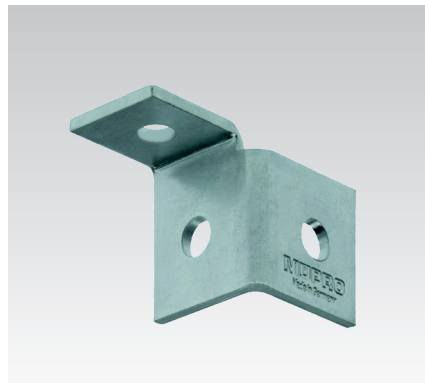
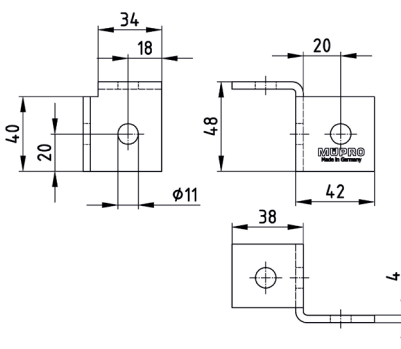
- Connecting elements for the construction of frames, shelves and wall-mounted installations using MPC-Support channels

Your advantages

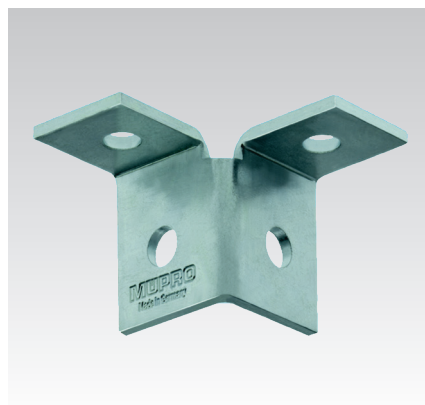
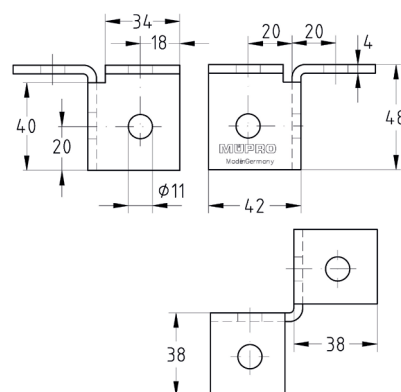
- Creation of solid constructions without welding
- Various mounting options for stable joint and angle connections with MPC-Support channels
- Appropriate combination of elements allows junctions with up to four exit directions
- Great flexibility - a large variety of connections can be made with only a few components
- Quick and simple attachment in combination with MPC-Quick fastener for angle mounting



MPC-Lateral angle, right



MPC-Lateral angle, left



MPC-Lateral angle, double-sided

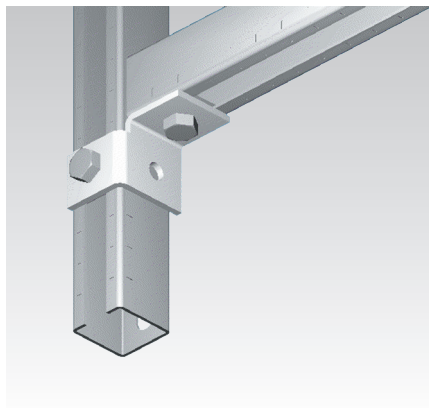
Features



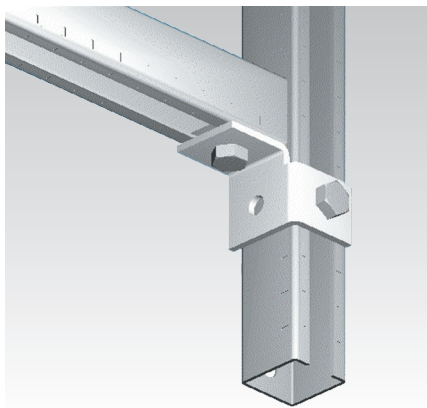
Type	Design	For profiles	Part no.	Sales unit	Pack unit
90°	right	38/24-40/120	123068	10	Pieces
	left		123060		
	double-sided		123048		

⚠ Also available in stainless steel version upon request.

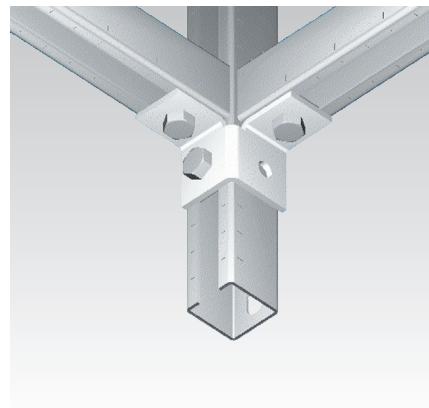
MPC-Lateral angles galvanised



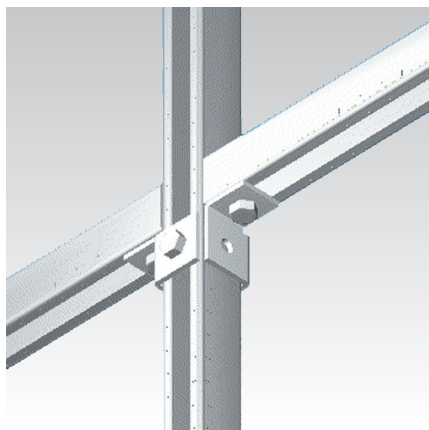
MPC-Lateral angle, right



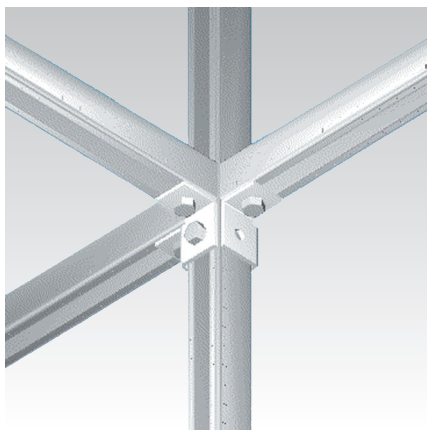
MPC-Lateral angle, left



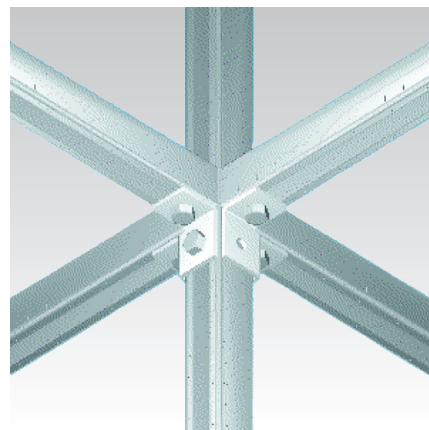
MPC-Lateral angle, double-sided



Construction of shelf using MPC-Support channels - junction point with connections in 2 directions



Construction of shelf using MPC-Support channels - junction point with connections in 3 directions



Construction of shelf using MPC-Support channels - junction point with connections in 4 directions