

## MPC-Channel connectors

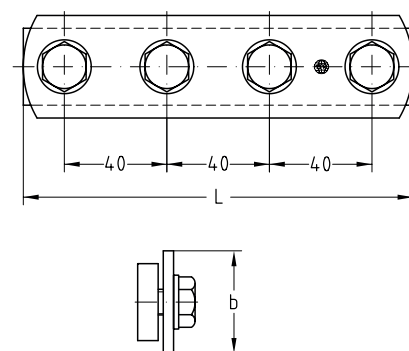
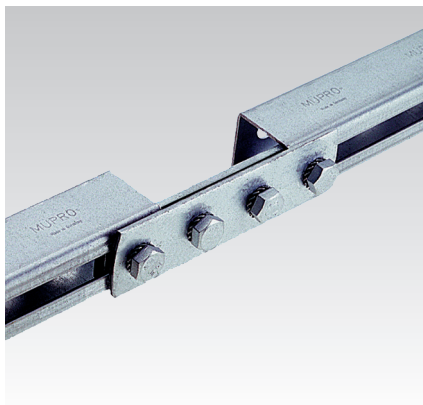
galvanised

**Application**


- Quick butt-joint connection for MPC-Support channels

**Your advantages**

- Enables exact alignment of the channels
- Four bolts provide a frictional joint
- Smooth attachment by sliding into the channel section



For profiles	Dimensions [mm]		Part no.	Sales unit	Pack unit
	b	L			
27/18, 28/30	25	148	120060	1	Pieces
38/24-38/40, 39/52-40/80, 41/21-41/62	40	152	163109	25	

 Please refer to page 4/80 for the heavy-duty version of the channel connectors.