

MPC-Saddle support type 3

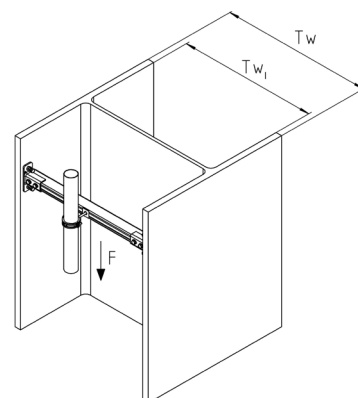
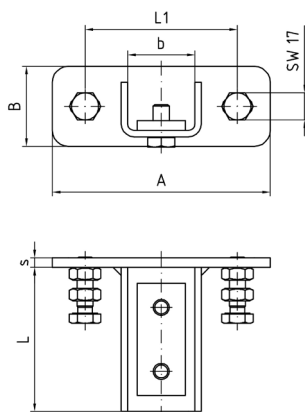
thrust piece crosswise, galvanised

Application

- Crosswise saddle support with clamping bolts for a safe and quick installation of the MPC-Support channels between the flange of structural steel sections

Your advantages

- Fastening on the structural steel element without drilling or welding work, saves time and costs
- Secure installation of the MPC-Support channels in the channel slot through double rail nuts
- Can be fastened quickly and easily via clamping screws
- Universal implementation at different section widths



Features

For girder flange expanses T_w	≥ 260 mm
Max. recommended load for cut length $L \leq 500$ mm [N]	3,000
Max. recommended load for cut length $L \leq 700$ mm [N]	2,000
Max. recommended load for cut length $L \leq 900$ mm [N]	1,000
Cut length L of the channel section	Girder flange expanse (inside), $T_{w1} - 17$ mm
Tightening torque [Nm]	10

Design	For profiles	Dimensions [mm]						Part no.	Sales unit	Pack unit
		A	b	B	L	L1	s			
crosswise	38/24-40/60	136	42	50	90	91.5	6	156808	8	Pieces