

MPC-Mounting angles

for MPC-Support channels 38/24 to 40/120, galvanised

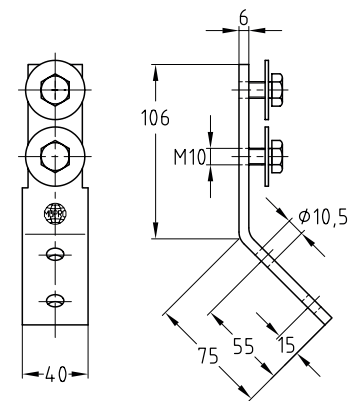
Application

- Solid fixing element for construction of pre-wall installations and shelves as well as for channel constructions for attachments of pipelines and air ducts without welding
- Also applicable for direct mounting on walls, ceilings or floors


Your advantages

- Versatile in use, e.g. as: angular support bracket, connection element
- Multi-purpose component for professional, practical installation solutions
- Quick installation on site due to pre-assembled bolts and washers

Completely pre-assembled:
1 MPC-Mounting angle 45°,
2 Hexagonal head bolts M10,
2 Washers



Design	For profiles	Part no.	Sales unit	Pack unit
45°	38/24-40/120	118769	10	Pieces

 Please refer to pages 4/85 to 4/87 for mounting angles 90° for MPC-Support channels 38/24 to 40/120.