

MPC-Mounting angles

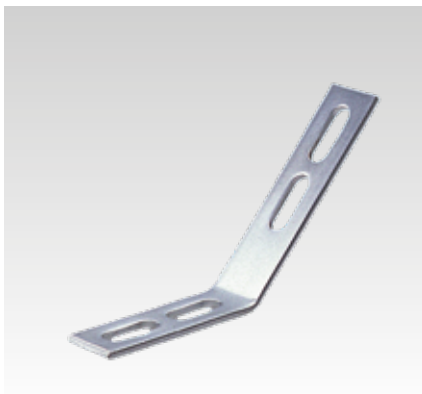
for MPC-Support channels 27/18 and 28/30, galvanised

Application

- Solid fixing element for construction of pre-wall installations and shelves as well as for channel constructions for attachments of pipelines and air ducts without welding
- Also applicable for direct mounting on walls, ceilings or floors

Your advantages

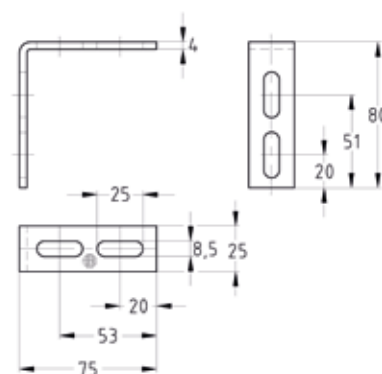
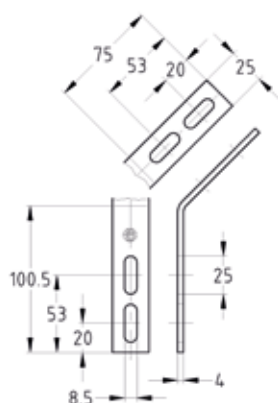
- Versatile in use due to oblong holes
- Versatile, e.g. as: support bracket, connecting élément, angle bracket
- Multi-purpose component for professional, practical installation solutions



Mounting angle 45°



Mounting angle 90°



Design	For profiles	Part no.	Sales unit	Pack unit
45°	27/18, 28/30	118753	10	Pieces
90°		118797		