

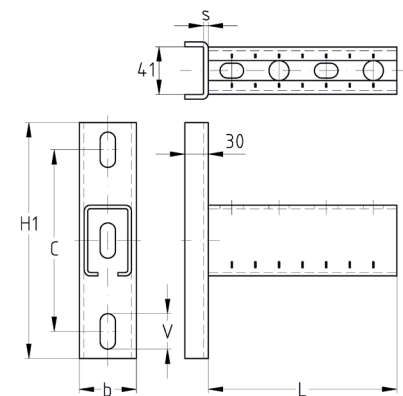
### MPC-Wall hanger brackets for the attachment on support channels, galvanised

#### Application


- Wall hanger bracket with solid, rounded-edge base plate for the attachment on support channels
- Solid cantilever construction due to support from diagonal strut

#### Your advantages

- Clip-over edges of the base plate for good appearance
- Variety of set lengths covers all constructional requirements
- Simple height adjustment when mounted in the channel slot
- Clean-cut appearance by the use of MPC-protection caps



For profiles	Length L [mm]	Dimensions [mm]					Part no.	Sales unit	Pack unit
		b	C	H1	s	V			
40/60, 40/80, 40/120	560	49	154	200	4	13 x 30	118401	1	Pieces
	640						118405		
	800						118413		
	1,040						118397		

 See MPC-Wall hanger bracket 40/60 for load-bearing capacities. When mounted in the channel slots, the max. recommended shear and tensile loads for the accessories (e.g. MPC-Hammer head bolts) must be observed.