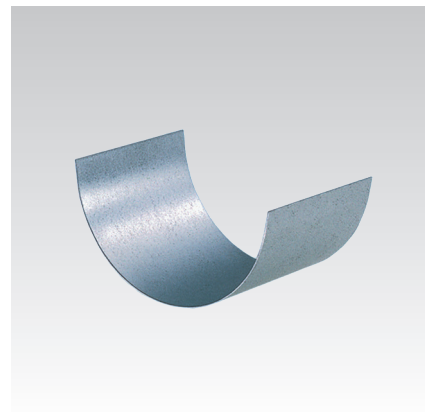
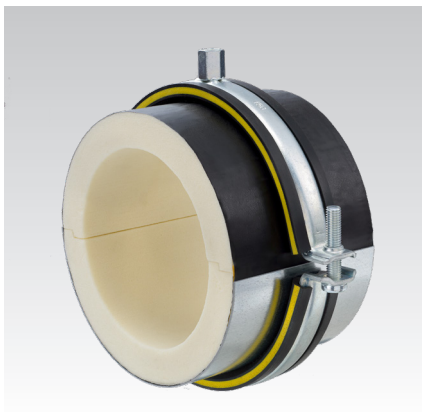


### Load-distributing sleeves

for insulation clamps with PU shells, galvanised

#### Application

- For large pipe diameters or spacings between supports it is mandatory that insulation clamps with PU shells are fitted with load distributing sleeves for improved load distribution.
- The use of load distributing sleeves for pipe diameters of 2" and more is recommended.



| Pipe outer Ø D |       | Insulation thickness<br>[mm] | Shell length<br>L<br>[mm] | Thickness<br>[mm] | Part no. | Sales unit | Pack unit |
|----------------|-------|------------------------------|---------------------------|-------------------|----------|------------|-----------|
| [inch]         | [mm]  |                              |                           |                   |          |            |           |
| 1"             | 33.7  | 20                           | 100                       | 1                 | 116968   | 1          | Pieces    |
| 1¼"            | 42.4  |                              |                           |                   | 117022   |            |           |
| 1½"            | 48.3  |                              |                           |                   | 117055   |            |           |
|                | 57    |                              |                           |                   | 117082   |            |           |
| 2"             | 60.3  |                              |                           |                   | 117097   |            |           |
|                | 70    |                              |                           |                   | 117109   |            |           |
| 2½"            | 76    |                              |                           |                   | 117124   |            |           |
|                | 83    |                              |                           |                   | 117138   |            |           |
| 3"             | 88.9  |                              |                           |                   | 117150   |            |           |
|                | 102   |                              |                           |                   | 116699   |            |           |
|                | 110   |                              |                           |                   | 116717   |            |           |
| 4"             | 114.3 |                              |                           |                   | 116732   |            |           |
|                | 125   |                              |                           |                   | 116750   |            |           |
|                | 133   |                              |                           |                   | 116765   |            |           |
| 5"             | 139.7 |                              |                           |                   | 116780   |            |           |
|                | 160   |                              |                           |                   | 116804   |            |           |
| 6"             | 168.3 |                              |                           |                   | 116815   |            |           |
| 8"             | 219.1 |                              |                           |                   | 116864   |            |           |

**!** Depending on the conduit one or, e.g. for vertical pipes, two half-sleeves are needed around the shells to distribute the load. If vapour-tight, overlapped and glued butt joints are required, 100 mm-long load-distributing sleeves should always be combined with PU shells of 250 mm length. This leaves the insulation contractor sufficient excess to mask the butts.

#### Please submit your order as follows:

- For load-distributing sleeves in half-sleeve design:  
Part no. of insulation clamp + 1 piece of part no. of load-distributing sleeve
- For load-distributing sleeves as full-sleeve design:  
Part no. of insulation clamp + 2 pieces of part no. of load-distributing sleeve