

DUPLO-Solar galvanised

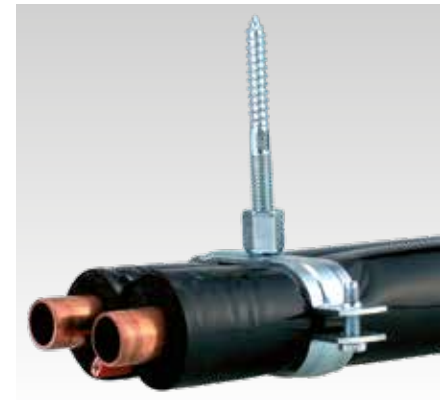
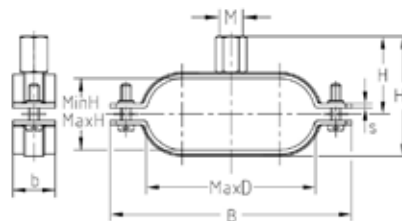
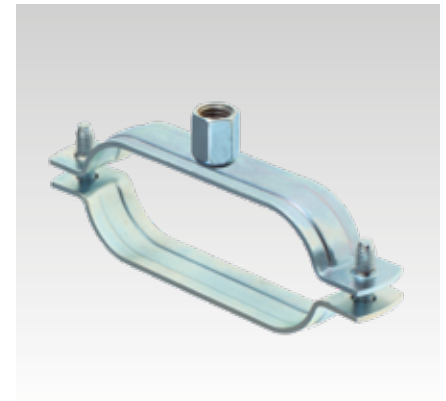
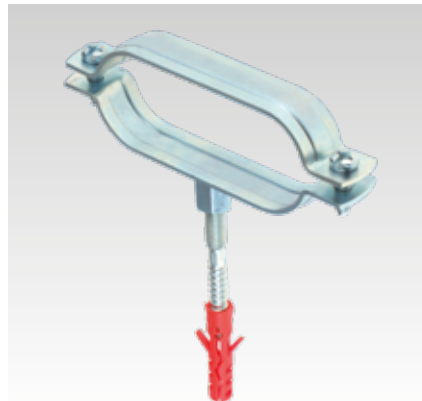


Application

- Clamp for fastening header pipes and return lines from the collector to the heat accumulator for solar heating systems

Your advantages


- Clamp is delivered in a set with the required accessories
- Easy to use - minimal installation effort
- Stable design due to creased half clamps
- Connecting thread M8/M10
- Full insulation effect is ensured
- Clamp holds pre-insulated pipe securely and material friendly



Features

Max. recommended load [N] 2,000

Connecting thread	Clamping range [mm]			Dimensions [mm]					Part no.	Sales unit	Pack unit
	Min H	Max H	Max D	b	s	B	H	H1			
M8/M10	28	55	80	20	2	120	37	57	132249	1	Pieces

 1 set consists of 4 clamps, 4 bolt screws (M8 x 80 mm) and 4 nylon plugs (10 mm x 50 mm).