

### Insulation clamps type H, M, T

two-piece, with single bossed clamps JUNIOR with DÄMMGULAST® green and insulation shells, galvanised

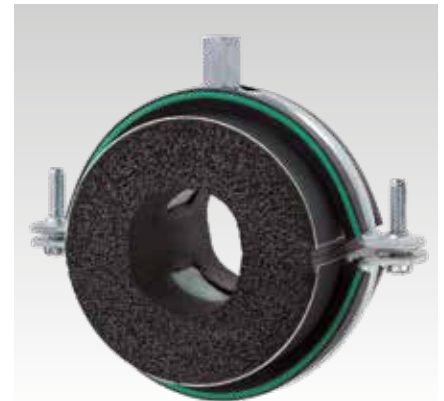
#### Application

- Thermal decoupled pipe attachment in the field of refrigeration
- Specially suitable for attachments in ventilation, air-conditioning, heating, refrigeration installations as well as for hot and chilled water pipes

#### Your advantages

- Rigorous avoidance of temperature bridges in cold pipelines
- Highly effective insulation due to support elements made of PET and a synthetic rubber mantle

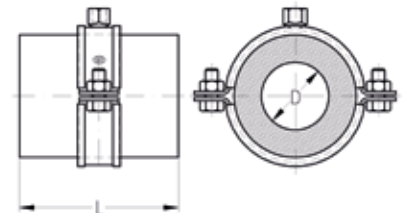
- Insulation thickness matched to the increasing insulation layer thickness of the insulation sleeves
- Reliable water vapour diffusion barrier
- Easy installation using self-adhesive fasteners in the part-joint
- Rubber surfaces on the face sides allow easy bonding with the rubber pipe insulation
- Fixed load-distribution sleeves for improved load transfer
- Structure-borne noise damping due to DÄMMGULAST® vibration control lining with green identification stripe: Average sound level improvement up to 18.6 dB(A)



#### Features



Material	Polyethylene terephthalate, synthetic rubber
Fire classification	Euroclass E - EN 13501-1 in systems association with AF/Armaflex: B-S3-d0
Effective density [kg/m³]	100
Thermal conductivity	$\lambda = 0.033 \text{ W/mK at } 0 \text{ }^\circ\text{C}$ $\lambda = 0.037 \text{ W/mK at } +40 \text{ }^\circ\text{C}$
Temperature range	-50 °C to +110 °C
Water vapour diffusion resistance	$\mu = 10,000$
Design	2 PET segment shells and closed-cell elastomeric foam, integral load-distributing sleeves, with two-piece pipe clamp, vibration-damped with DÄMMGULAST® lining



### Insulation clamps type H, M, T

two-piece, with single bossed clamps JUNIOR with DÄMMGULAST® green and insulation shells, galvanised

#### Type H - Insulation thickness 9.5 - 16 mm

Pipe outer Ø D			Connecting thread	Insulation clamps		Sales unit	Pack unit	Size [mm]	Shell length L [mm]	Insulation shells		Sales unit	Pack unit
Copper pipes [mm]	Steel pipes [inch]	Steel pipes [mm]		Max. recommended fastening distance [m]	Part no. complete clamp					Outer Ø shell [mm]	Part no. single shell		
10		10.2	M8/M10	2	149350	1	Pieces	10/12	45	34	124168	1	Pieces
12										36			
	1/4"			38									
15				149351	15/18	40	111773						
18	3/8"					43							
22	1/2"			2.75	149352	22/25	47	111779					
24							50						
28	3/4"			3	149353	28/30	53	111781					
30							56						
35	1"			3.5	149354	35/38	50	111783					
38							64						
42				3.75	149355	42/45	65	111785					
		44.5					69						
	1 1/2"			4.25	149356	48	55	111787					
54							76						
57				149357	54/57	82	111789						
								85					
64	2"			4.75	149358	60/64	65	111791					
70							89						
				149359	70	98	111793						
								92					
	2 1/2"			5.5	149360	76/80	75	111795					
80							105						
				6	149361	89	95	111797					
	3"		118										
		101.6	150261	102	134	111765							
108							137						
	4"		149362	108	137	111767							
							144						
125			149363	114	115	144	111767						
								155					
			149364	125	133	165	111771						
		133						172					
	5"		149365	133	140	172							
							172						
			149366	140	172	172							
							172						




Please refer to chapter „Insulation“ for further information and insulation products.

### Insulation clamps type H, M, T

two-piece, with single bossed clamps JUNIOR with DÄMMGULAST® green and insulation shells, galvanised

#### Type M - Insulation thickness 15.5 - 25 mm

Pipe outer Ø D			Connecting thread	Insulation clamps			Sales unit	Pack unit	Size [mm]	Shell length L [mm]	Insulation shells		Sales unit	Pack unit
Copper pipes [mm]	Steel pipes [inch]	Steel pipes [mm]		Max. recommended fastening distance [m]	Part no. complete clamp	Outer Ø shell [mm]					Part no. single shell			
10		10.2	M8/M10	2	149368	1	Pieces	10/12	55	46	111801	1	Pieces	
12										48				
	¼"			50										
15				149369	15/18	52		111809						
18	⅜"					55								
22	½"			2.75	149370	22/25		59	111821					
24				62										
28	¾"			3	149371	28/30		68	111829					
30				70										
35	1"			3.5	149372	35/38		65	111835					
38				79										
42				3.75	149373	42/45		81	111837					
		44.5		85										
	1½"			4.25	149374	48		88	111839					
54				149375				91						
57				4.75	149376	54/57		98	111841					
	2"							101						
64				149377	60/64	75		105	111843					
70								109						
				116	149378	76/80		85	111847					
80	2½"		122											
			6	149379	89	100	127	111849						
	3"						136							
		101.6	149380	102	115	115	151	111799						
108			149381	108										
	4"		149382	114	162	111803								
125			151163	125	173	111805								


 Please refer to chapter „Insulation“ for further information and insulation products.

### Insulation clamps type H, M, T

two-piece, with single bossed clamps JUNIOR with DÄMMGULAST® green and insulation shells, galvanised

#### Type T - Insulation thickness 32 - 45 mm

Pipe outer Ø D			Connecting thread	Insulation clamps		Sales unit	Pack unit	Insulation shells						
Copper pipes [mm]	Steel pipes [inch]	Steel pipes [mm]		Max. recommended fastening distance [m]	Part no. complete clamp			Size [mm]	Shell length L [mm]	Outer Ø shell [mm]	Part no. single shell	Sales unit	Pack unit	
15			M8/M10	2	149390	1	Pieces	15/18	75	77	111887	1	Pieces	
18	¾"			2.75	149391			22/25		80	111895			
22	½"			3	149392			28/30		84	111901			
24				3.5	149393			35/38		85	104			111905
28	¾"			3.75	149394			42/45		107	113			111909
30				4.25	149395			48	116	119	111911			
35	1"			4.25	149396				54/57	126	119			111913
38				4.75	149397				60/64	100	129			134
42				4.75	149397			70	137	144	111917			
		44.5		5.5	149399				76/80	115	152			111919
54	1½"			6	149400			89	156	167	111921			
57									125					
64	2"													
70														
80	2½"													
	3"													

 Please refer to chapter „Insulation“ for further information and insulation products.