

EURO-QUICK® type EXP

without lining, galvanised

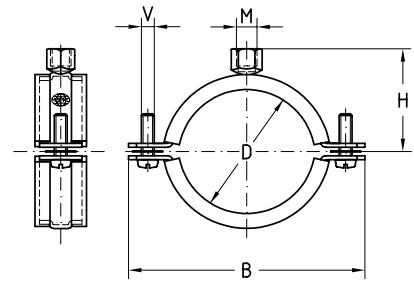
Application

- Suitable for pipe attachments in industrial areas
- Suitable for fastening of drinking water and heating pipes
- For indoor use

Your advantages

- Proven two-piece clamp

- High stiffness due to reinforcing bead
- The 2 locking screws allow adjustment to accommodate a greater variation in pipe diameter
- Tightening bolts with combination cross-head convenient for power driver
- Fastener screw with captive washer



Features

Size	Max. recommended load [N]
3/8" - 1/4"	1,300
1/2" - 71 mm	1,600
2 1/2" - 125 mm	2,300
129 mm - 8"	2,600

Connecting thread M	Size		Dimensions [mm]			Part no.	Sales unit	Pack unit	
	[inch]	[mm]	B	H	V				
M8/M10	3/8"	15 - 20	52	30.5	M5	179782	100	Pieces	
		1/2"	19 - 23	54.5		32			179783
			23 - 27	58.5		34			179784
	3/4"	26 - 30	62.5	36		179785			
	1"	32 - 36	68.5	39		179786			
	1 1/4"	39 - 43	76	42.5		179787			
	1 1/2"	45 - 49	91.5	47		179788	50		
		53 - 57	99	50.5		179789			
		59 - 64	105	53.5		179790			
	2"	66 - 70	112	57	179791	M6	25		
		2 1/2"	74 - 82	126	62				179792
			82 - 87	134	66				179793
	3"	90 - 98	142	70	179794		15		
		93 - 101	145	71.5	179795				
		102 - 110	153	75.5	179796				
	4"	109 - 117	161	79.5	179797		15		
		116 - 124	170	84	179798				
		129 - 139	184	90.5	179799				
	5"	136 - 144	190	93.5	179800	15			
142 - 150		197	97	179801					
159 - 168		213	105	179802					
6"	168 - 175	222	109.5	179803	15				
	201 - 211	257	127	179804					
	220 - 229	272	136	179805					