

VARIO-Base plates

zinc-nickel

Application

- For bracing applications
- For stiffening frame constructions
- For bracing wall hanger brackets from the wall or ceiling
- For indoor and outdoor use

Your advantages

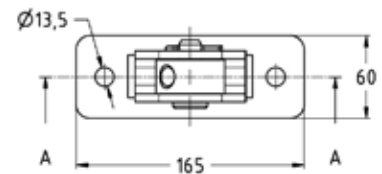
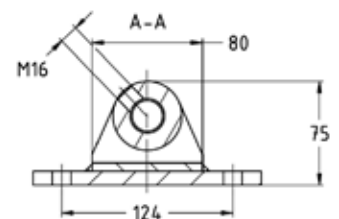
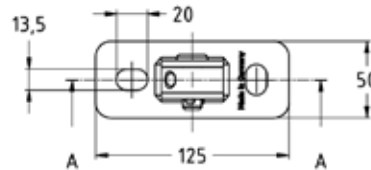
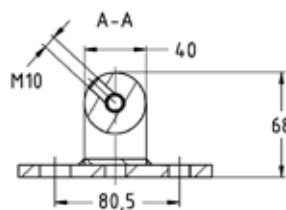
- Quicker and easier installation on site thanks to pre-assembled components
- Wide range of bracing applications from the wall and ceiling in combination with other VARIO components
- Combinable with the MPC, MPR and MPT support channel systems
- Two versions for different applications



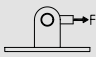
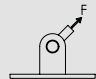
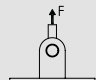
M10 version



M16 version



Features

Max. recommended tensile load [N]	Connecting thread	
	M10	M16
0°	7,000	34,600
		
45°	10,000	
		
90°	12,000	
		



Connecting thread	Hole-centre distance C [mm]	Dimensions [mm]			Part no.	Sales unit	Pack unit
		B	L	s			
M10	80.5	50	125	8	180588	10	Pieces
M16	124	60	165	10	180589		

