

MPT-Angle connectors 90°

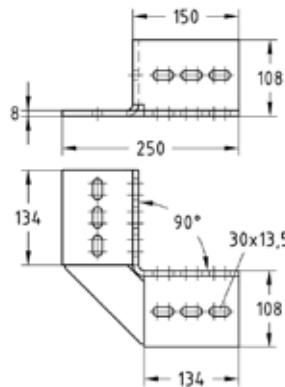
hot-dip galvanised

Application

- Connecting element for shelves and rail constructions in heavy-duty building technology, industrial construction and plant engineering

Your advantages

- Fast and simple installation of 90° angled joints
- Quick attachment using MPT-Hammer head fasteners for secure transmission of high forces
- Time and cost savings thanks to easy handling and assembly on the construction site
- High-quality hot-dip galvanising for universal implementation outdoors and indoors



For profiles	Weight [kg]	Part no.	Sales unit	Pack unit
Q100-2.5, Q100-3.5	3,564	176742	1	Pieces