

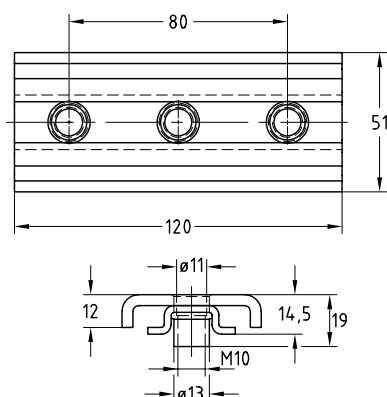
MPR-Sliding shoes galvanised

Application

- Attachment of pipes with thermal, axial expansion
- Suitable for pipes mounted from above and from below
- For use in dry interiors
- Ideal for fastening plastic pipes with long sliding distances

Your advantages

- Length of sliding distance can be freely determined by suitable selection of support channel length
- In connection with the MPR-Support channel 41/21 very low installation height of only 25 mm
- For use with all MPR-Support channels from 41/21 to 41/124
- Heavy-duty all-metal design



Features

Material thickness of support channel [mm]	Max. recommended load [N]
1.5	1,600
2.0	4,200
2.5	5,400

Connecting thread	For profiles	Part no.	Sales unit	Pack unit
M10	41/21-41/124	176154	25	Pieces