

MPR-T-Connection plates type S+ QL

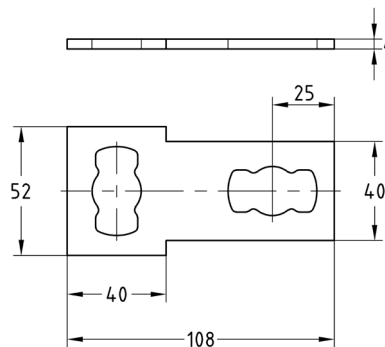
hot-dip galvanised

Application

- Stable connection plate for use in cramped mounting situations
- For indoor and outdoor use

Your advantages

- Simple and quick connection of T-connections
- The mounting plates enable frame construction in one plane in which the channel slots have the same alignment
- Quick and simple attachment in combination with the MPR-Connection lock type S+



| Design | For profiles | Part no. | Sales unit | Pack unit |
|--------|--------------|----------|------------|-----------|
| 1+1 QL | 41/21-41/124 | 175784 | 25 | Pieces |

