

MPR-Angle connector 45° type S+

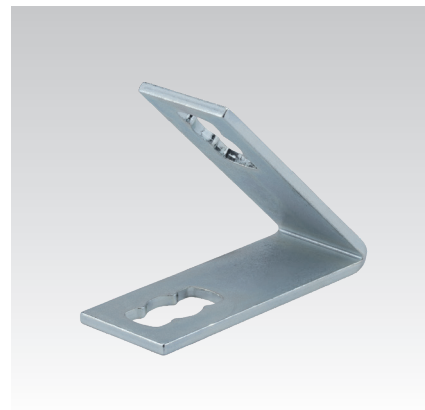
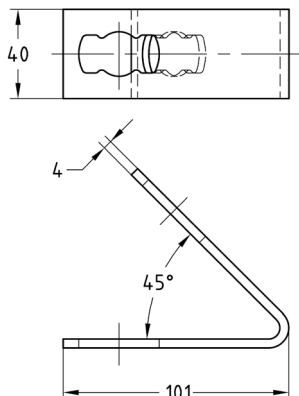
hot-dip galvanised

Application

- Connecting element for on-the-wall installations, shelves and rail constructions, preferably by using the MPR-Support channel 41/41

Your advantages

- Fast and simple installation of angled joints in combination with the MPR-Connection lock type S+



| Design | For profiles | Part no. | Sales unit | Pack unit |
|--------|--------------|----------|------------|-----------|
| 1+1 | 41/21-41/124 | 165880 | 10 | Pieces |

MPR-Angle connectors 90° type S+

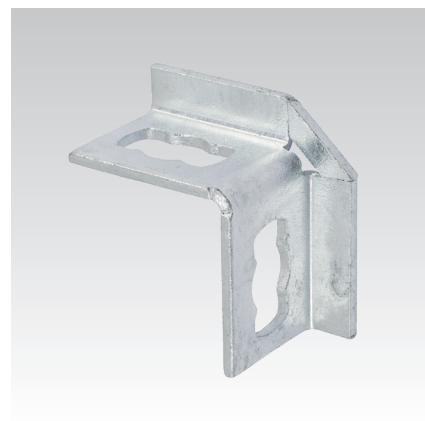
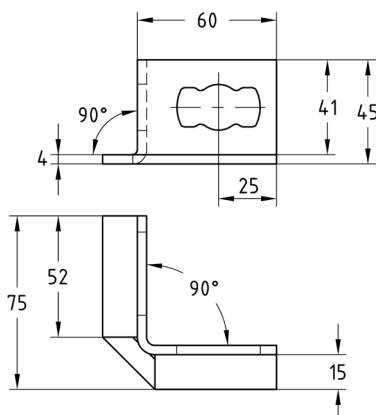
hot-dip galvanised

Application

- Stable angle connector for 90° connections in cramped mounting situations
- For indoor and outdoor use

Your advantages

- Fast and simple installation of 90° corner joints with the MPR-Connection lock type S+
- The angle connector allows a fast and stable connection, especially of MPR-Support channels 41/21



| Design | For profiles | Part no. | Sales unit | Pack unit |
|--------|--------------|----------|------------|-----------|
| 1+1 | 41/21-41/124 | 175786 | 25 | Pieces |

