

MPC-Quick fasteners+

with internal thread, galvanised

Application

- Secure and easy installation in slot of MPC-Support channel in order to attach mounting accessories
- For use in dry interiors

Your advantages

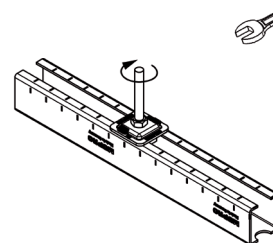
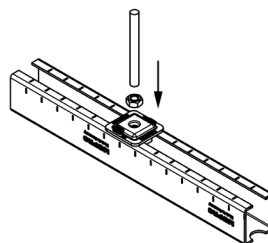
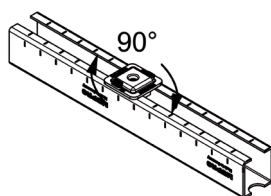
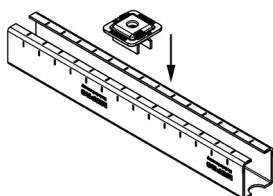
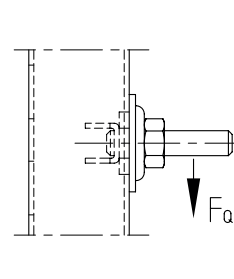
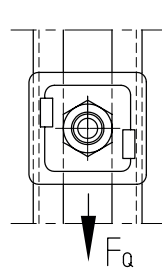
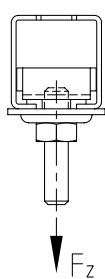
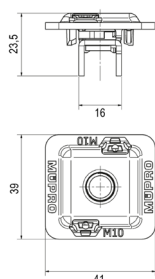
- Time-saving attachment in the channel slot, even if subsequently fitted between existing pipe sections
- Simple and secure handling: insert in the MPC-Support channels - turn - and the MPC-Quick fastener is fixed. No slipping, no falling out
- High quality and load capacity



For profiles 27/18 and 28/30



For profiles 38/24 to 40/120



Features



| For profiles | Connecting thread | Max. recommended tensile load F_z [N] | Max. recommended load lateral (displacement) F_q [N] | Tightening torque [Nm] |
|----------------------|-------------------|---|--|---------------------------|
| 27/18 L | M8 | 1,000 | 200 | 7 |
| | M10 | | 300 | |
| 27/18 | M8 | 1,750 | 200 | |
| | M10 | | 300 | |
| 28/30 | M8 | 2,500 | 200 | 9 |
| | M10 | | 300 | |
| 38/24 | M8 | 2,000 | 200 | |
| | M10 | | 300 | |
| 38/40, 38/80 | M8 | 2,800 | 400 | 9 |
| | M10 | | | 17 |
| 39/52 | M8 | 3,300 | | 9 |
| | M10 | | | 17 |
| 40/60, 40/80, 40/120 | M8 | 4,000 | 600 | 9 |
| | M10 | | | 17 |

| For profiles | Connecting thread | Part no. | Sales unit | Pack unit |
|--------------|-------------------|----------|------------|-----------|
| 27/18, 28/30 | M8 | 175766 | 100 | Pieces |
| | M10 | 175771 | | |
| 38/24-40/120 | M8 | 175463 | | |
| | M10 | 175464 | | |