

MPC-Quick fasteners+

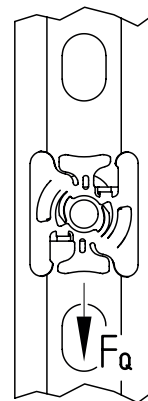
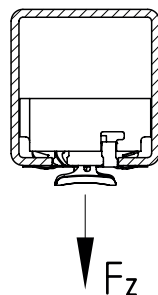
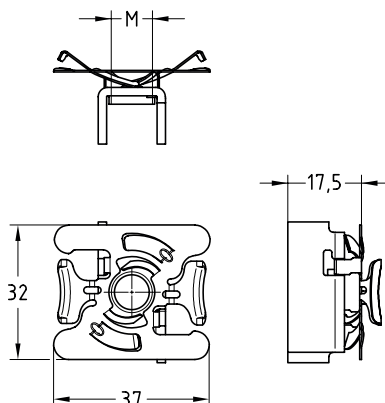
for angle mounting, stainless steel

Application

- Secure and easy installation in slot of MPC-Support channel in order to attach mounting accessories
- Angle-mounting for fast and efficient installation of brackets and mounting angles
- For indoor and outdoor use

Your advantages

- Time-saving attachment in the channel slot, even if subsequently fitted between existing pipe sections
- Simple and secure handling: insert in the MPC-Support channels - turn - and the MPC-Quick fastener is fixed. No slipping, no falling out
- High quality and load capacity



Features

| For profiles | Connecting thread | Max. recommended tensile load F_z [N] | Max. recommended load lateral (displacement) F_q [N] | | Tightening torque [Nm] |
|--------------|-------------------|---|--|---|------------------------|
| | | | 1-hole mounting angle and 1 mounted quick fastener | 2-hole mounting angle and 2 mounted quick fasteners | |
| 38/40 | M8 | 3,000 | | | 14 |
| | M10 | 3,100 | | | 28 |
| 40/60 | M8 | 3,200 | | | 14 |
| | M10 | 4,000 | | | 28 |

| For profiles | Connecting thread | Material | Part no. | Sales unit | Pack unit |
|--------------|-------------------|----------|----------|------------|-----------|
| 38/40, 40/60 | M8 | V2A | 175781 | 50 | Pieces |
| | M10 | | 175782 | | |