

Mounting angle 90°

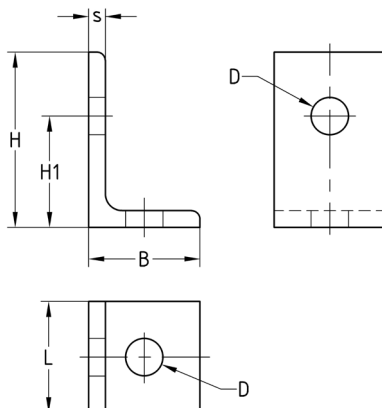
heavy-duty version, hot-dip galvanised

Application

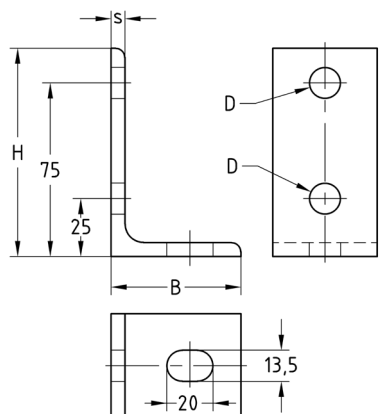
- Installation of pipelines on the wall and ceiling
- Fastening of brackets for water extinguishing systems to beams and components made of concrete or wood
- For indoor and outdoor use

Your advantages

- Stable design with high load capacity
- Execution according to VdS CEA 4001 for water extinguishing systems



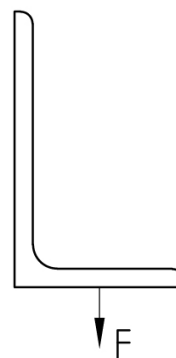
Size 1, 2



Size 3

Features

Size	Design	Max. recommended load [N]
1	50 x 32 x 30	3,500
2	63 x 40 x 40	5,500
3	90 x 56 x 45	



Size	Design	Dimensions [mm]						Part no.	Sales unit	Pack unit
		B	D	H	H1	L	s			
1	50 x 32 x 30	32	11	50	32	30	4	175599	50	Pieces
2	63 x 40 x 40	40	13.5	63	40	40	6	175600	25	
3	90 x 56 x 45	56		90	75	45		175601		