

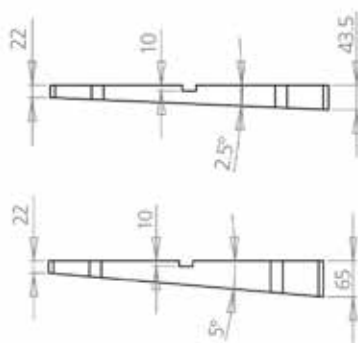
Big Foot 450

Application

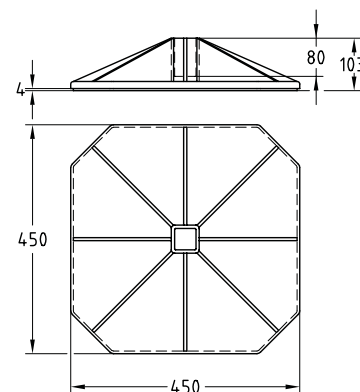
- Laying of large ventilation ducts on flat roofs

Your advantages

- For mounting rails 41/41 mm
- The standard MÜPRO fastening material for the corresponding rails can be used
- Additional protection of the roof skin with separate rubber mats
- The appropriate set can be selected depending on the pitch of the roof (0°, 2.5° or 5°)
- Excellent load distribution
- Versatile areas of application



Angled mat 2.5° and 5°



Set consisting of:
1 socket including glued anti-slip mat,
1 adapter for rail 41/41.
For part no. 177524, 177525 the corresponding slope mat 2.5° or 5° is added.

Features

Material	Foot construction made of 100% recycled, glass fiber reinforced nylon
Temperature range	-40 °C to +80 °C
Max. recommended load per piece [N]	10,000

Type	Weight [kg]	Part no.	Sales unit	Pack unit
Big Foot set 450	3.685	177522	1	Pieces
Big Foot set 450 2.5°	9.835	177524		
Big Foot set 450 5°	11.635	177525		
Protective lining	0.08	176375		

- ⚠ All effects on the load-bearing building structure and the roof insulation must be checked on site.
- The exact chemical composition of the roof membrane determines its susceptibility to polymer migration. Accordingly, the manufacturer of the roof membrane must provide information on its susceptibility to polymer migration and make specific recommendations.
- To prevent polymer migration, we recommend placing a protective fleece underneath.