

## Cavity plugs, pre-assembled

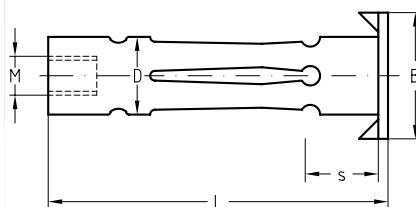
galvanised

### Application

- For mounting on cavity panels and drywall plasterboards made of gypsum, fiber metal sheets, chip-boards and sheet metal

### Your advantages

- Ideal solution for attachment to thin-walled panels
- Even all-round splaying ensures load distribution at the attachment point
- Large supporting surface for high loading capacity
- Can also be used in small cavities
- Available in a handy case with fitting tools
- With pre-assembled screw



### Features

Type	Connecting thread	Length L [mm]	Clamping thickness S [mm]	Drilling diameter D [mm]	Matching tension bolt	Max. recommended tensile load			Dimensions B [mm]	Part no.	Sales unit	Pack unit
						Plaster-board [N]	Wood panels [N]	Cement fiber board [N]				
6-3-16/50	M6	53	5 - 18	12	M6 x 60 LK	200	300	400	17.5	149518	100	Pieces
6-16-32/60		66	18 - 32		M6 x 75 LK					149519		
8-3-16/50	M8	55	5 - 18	13	M8 x 65 LK					149521	50	
8-16-32/60		68	18 - 32		M8 x 75 LK					149522		



LK - screw with oval head, Phillips head.

