

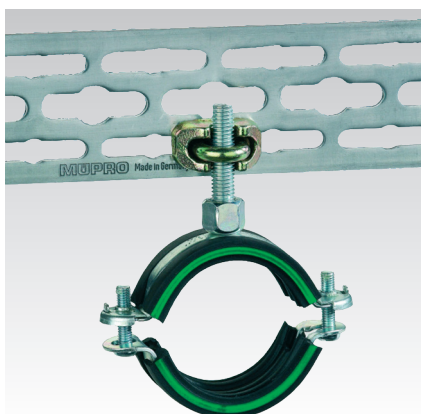
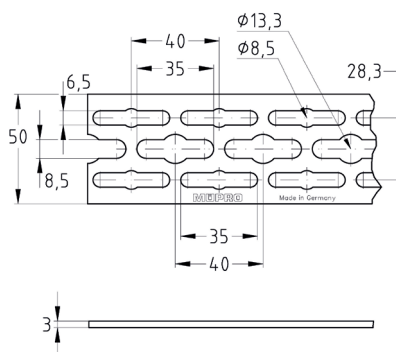
### StaboFix® Section galvanised

#### Application

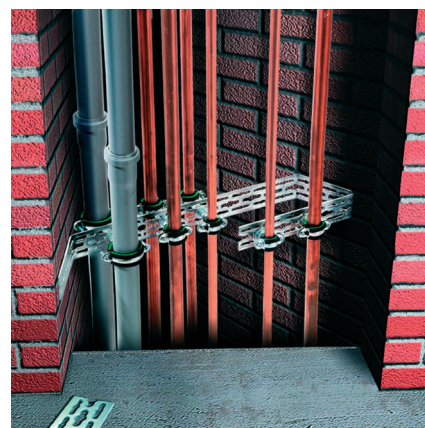
- Fixing system for mounting in cramped shafts, ducts and wash-basin installation

#### Your advantages

- High flexibility due to versatile range of applications in front of and within a wall, in wall recesses, wall break-throughs as well as in supply shafts
- Simple folding on site can bring the StaboFix® Sections into the desired form
- The StaboFix® Retaining plate can be simply and quickly clipped onto the sections and enables the attachment of non-twisting and centred wall carrier plates
- Smooth attachment of all common sanitary systems, while obtaining standard sanitary measures by means of a special hole template in the section
- Simple height adjustment of syphon bends or cross-running pipes using StaboFix® Clamps and threaded pins
- Pipe clamps with connection threads M8 and M8/M10 can be simply and quickly attached with StaboFix® Bolts
- All system components are perfectly matched to each other reducing the assembly effort
- High quality and firmness of the components
- Effective installation due to the basic assortment of installation components



For the fixing of syphon bends and cross-running pipes - simple height adjustment

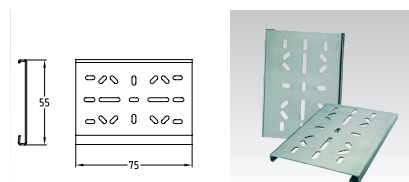


Installation in a shaft: Pass-through mounting with two pipe clamps and a threaded pin M8 or M10 for the attachment of parallel pipelines

| Length<br>[mm] | Width<br>[mm] | Thickness<br>[mm] | Part no. | Sales unit | Pack unit |
|----------------|---------------|-------------------|----------|------------|-----------|
| 2,000          | 50            | 3                 | 129076   | 10         | Pieces    |

### StaboFix® Retaining plate galvanised

| Length<br>[mm] | Width<br>[mm] | Part no. | Sales unit | Pack unit |
|----------------|---------------|----------|------------|-----------|
| 75             | 55            | 129073   | 5          | Pieces    |



- ⚠ The StaboFix® Retaining plate can be simply and quickly clipped onto the sections and enables the attachment of non-twisting and centred wall carrier plates